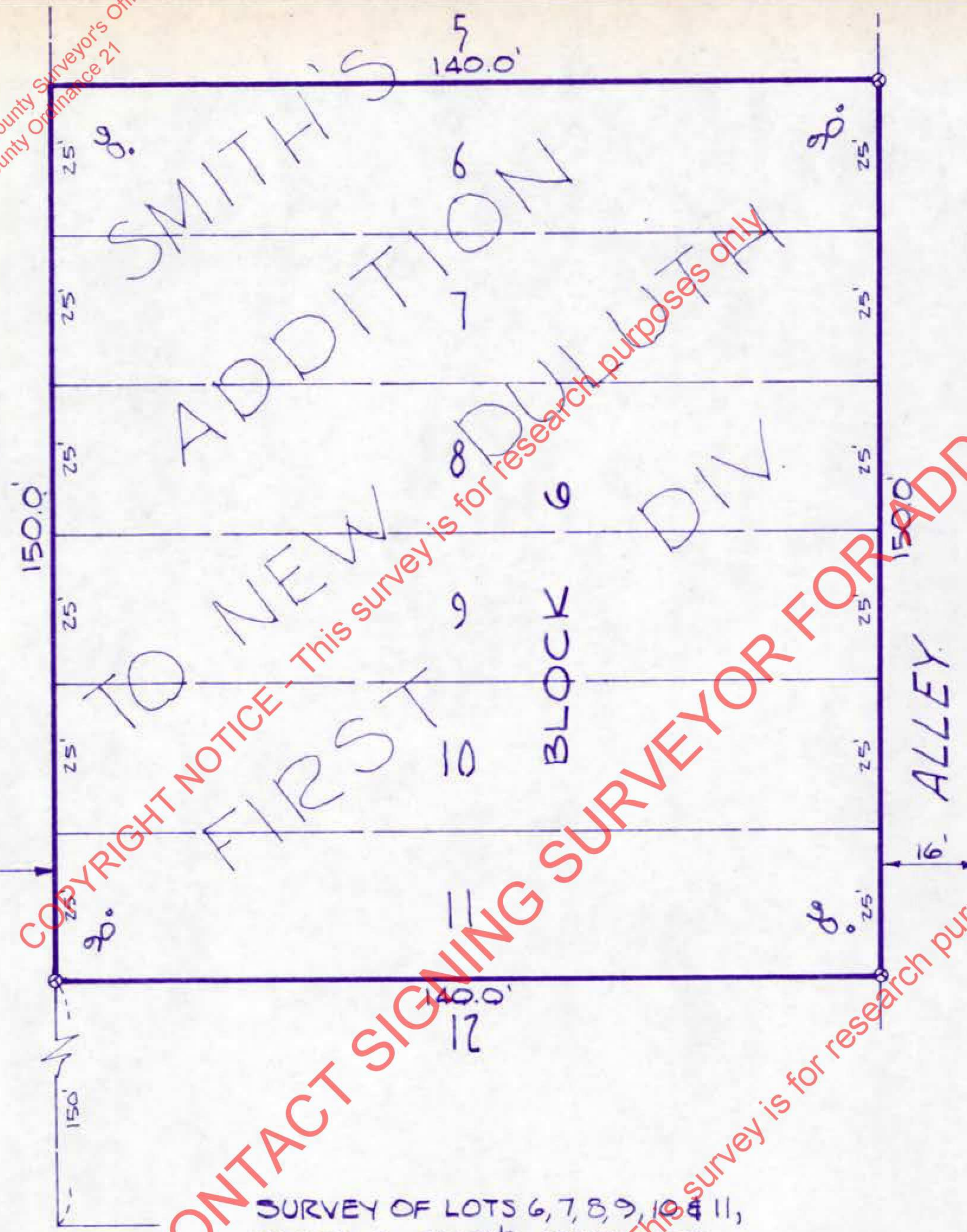


This survey was filed with the St. Louis County Surveyor's Office in accordance with St. Louis County Ordinance 21

WEST 96TH AVE.



This survey was filed with the St. Louis County Surveyor's Office in accordance with St. Louis County Ordinance 21

SCALE 1"=30'

LEGEND

○ IRON SURVEY MARKER SET

Not for Public Distribution

SURVEY OF LOTS 6, 7, 8, 9, 10 & 11, BLOCK 6, SMITH'S ADDITION TO NEW DULUTH, DULUTH, MINNESOTA.

This survey was filed with the St. Louis County Surveyor's Office in accordance with St. Louis County Ordinance 21

McCUE STREET

85-68

JACK D. SALO, INC.
CIVIL ENGINEERS AND SURVEYORS
15 EAST 1ST STREET DULUTH, MINN.

I hereby certify that this survey was prepared by me or under my direct supervision and that I am a duly Registered ~~Civil Engineer and~~ Land Surveyor under the laws of the State of Minnesota.

Dale L. Bentzen Reg. No. 13794

Date 6/20/84 Job No. L-3133

COPYRIGHT NOTICE - This survey is for research purposes only - CONTACT SIGNING SURVEYOR FOR ADDITIONAL USE